

Supplement: Modifying Eject Box '940

- **Model & Year:** 95-01 7-Series, U.S.
- **Expertise:** Beginner
- **Date:** May 12, 2021
- **Updated:**
- **Time Estimate:** 2 hours

7 Series ^{E38}

Tools Required

- Small Hand Saw
- Powered Cutting Tool (ex: Dremel)
- File, Sandpaper

Facilities Needed

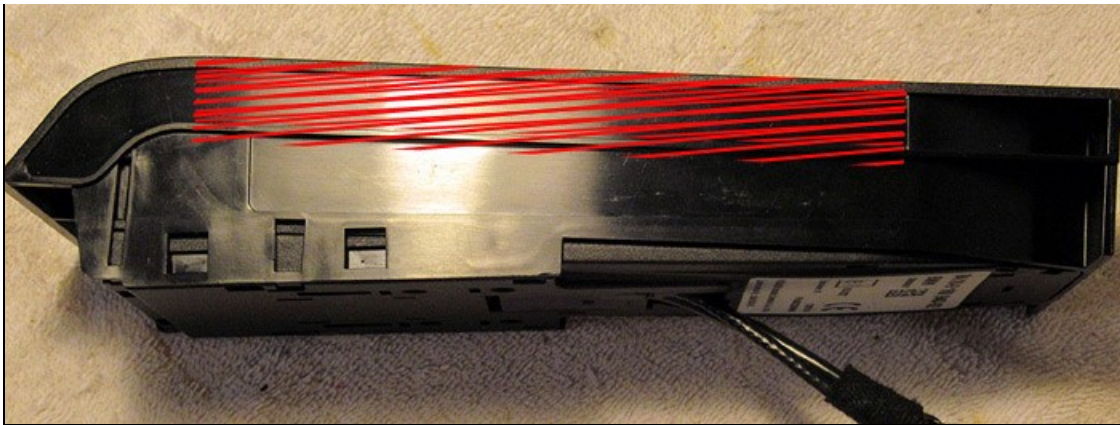
- None

Parts Required

- Eject Box 84-10-9-168-940, list \$120

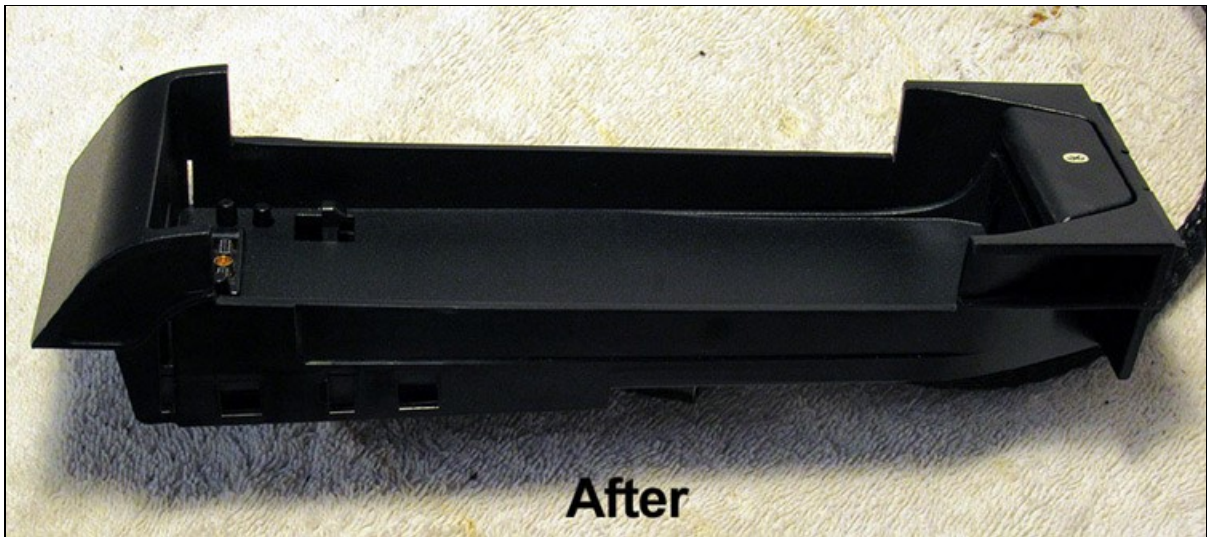
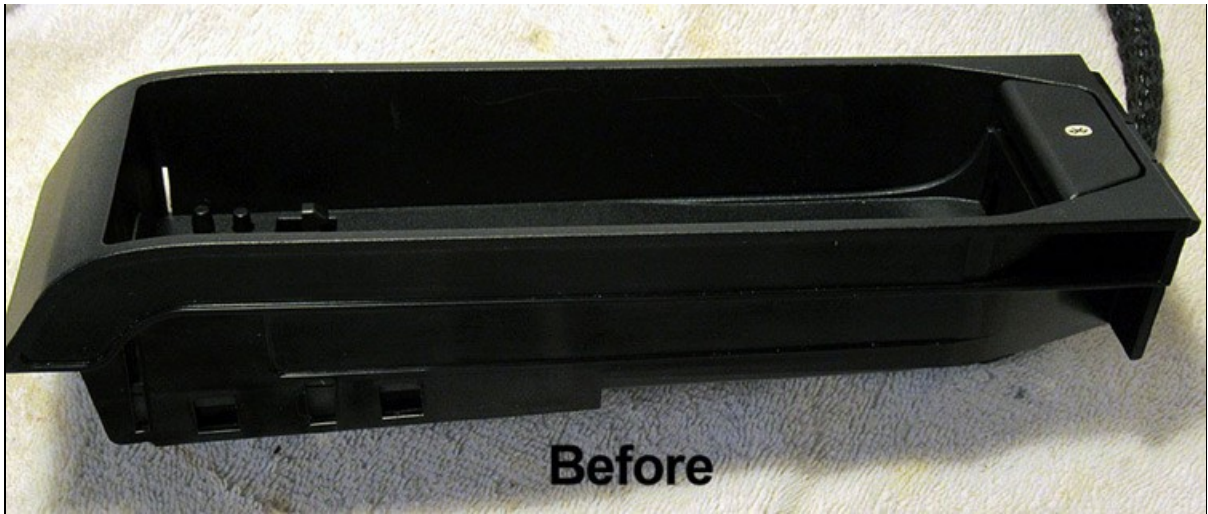
Getting Started

To accommodate current snap-in adapters, eject box '940 needs to be "opened up" to match the updated (and discontinued) box '122. Specifically, both the left and right cradle walls need to be cut away about 1 inch, to just below the trim lines on each side:



Procedure

Begin by using a hand saw to make the vertical cuts. Use the forward vertical trim line as a marker. The long horizontal cuts are best made using a Dremel tool with cutting wheel. Using the horizontal trim line as a guide, cut just below the line as illustrated in image above. After breaking away the scrap, use a file to smooth the cut surface:



Test-fit your snap-in adapter of choice to verify fitment. Once satisfied, finish with fine-grit sandpaper on all cut surfaces.

Frankie
Texas, USA
www.frankies-bmw.com